



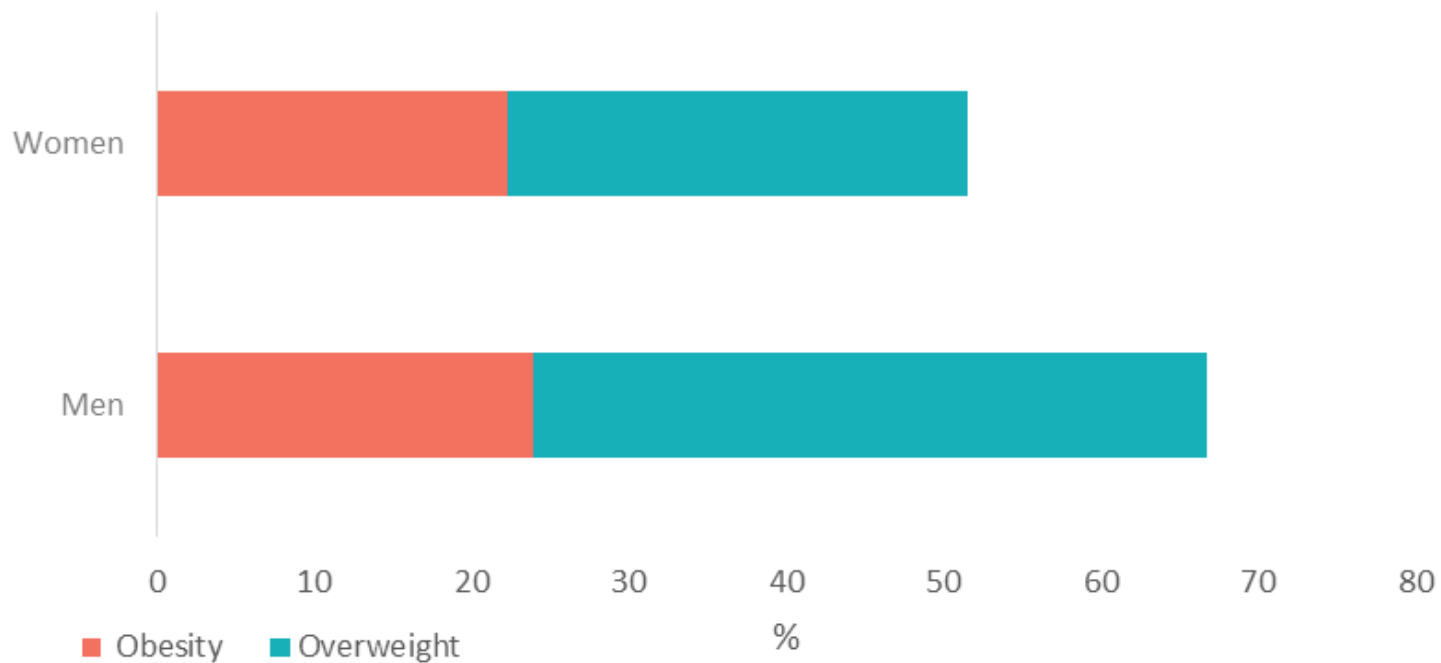
Extended Country Profile Graphics

	Pages
• General Overweight & Obesity Prevalence (%).....	2-3
• By Age & Education	4-5
• By Age & Income.....	6-7
• Trends in Children 2001-2013/4.....	8-11
• Trends in Adults by Income Quintile 2008-2014	12-13
• Trends in Adults by Education 2008-2014	14-15
• Drivers	
• Adolescent physical inactivity	16-17
• Adult physical inactivity	18-19
• Sugar, Vegetable, Confectionery, Sweet & Savoury, Fruit & Soft drink sales/consumption	20-25
• Impact	
• Diabetes.....	26
• High Cholesterol.....	27
• Raised Blood pressure.....	28-29
• Obesity related cancers.....	30-37
• Policies & Interventions (online).....	38
• View prevalence data (online)	39
• Sources.....	40

POPULATION:
10,543,186
(2015)
GINI INDEX:
26.13 (2012)

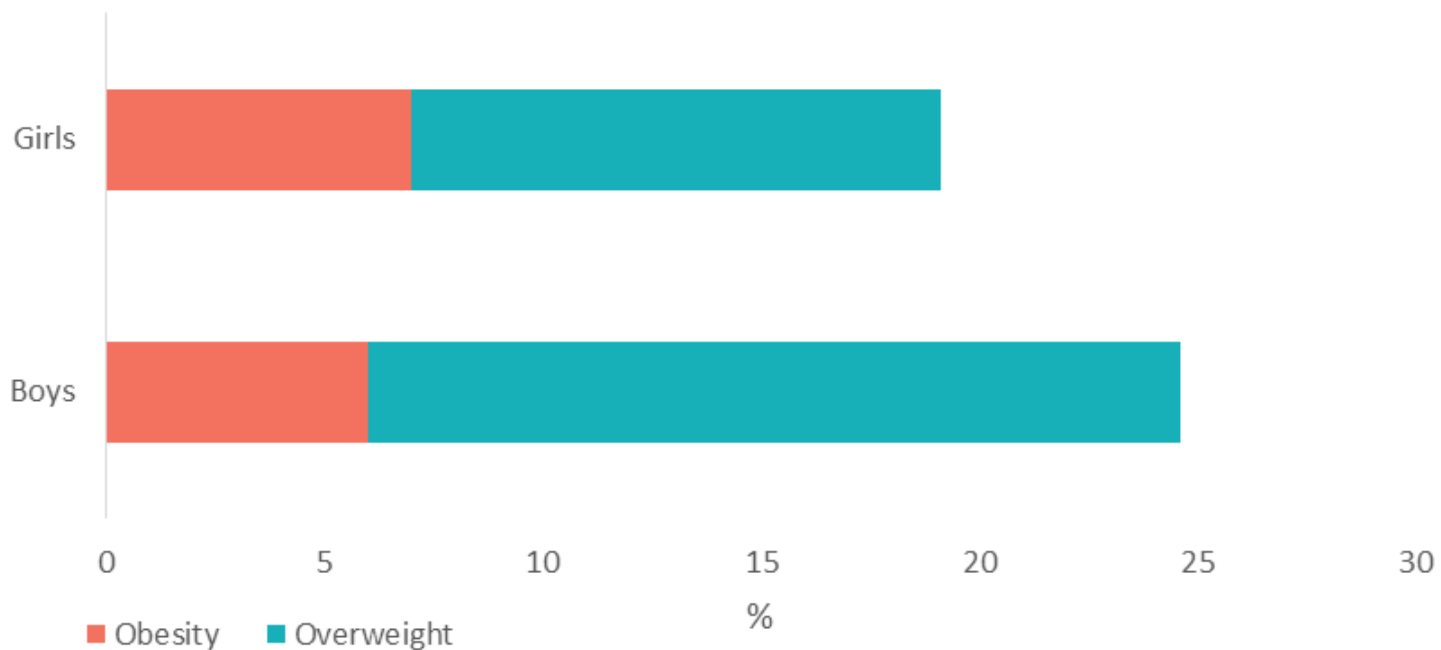


% Overweight & Obesity in Adults in the Czech Republic (2008)

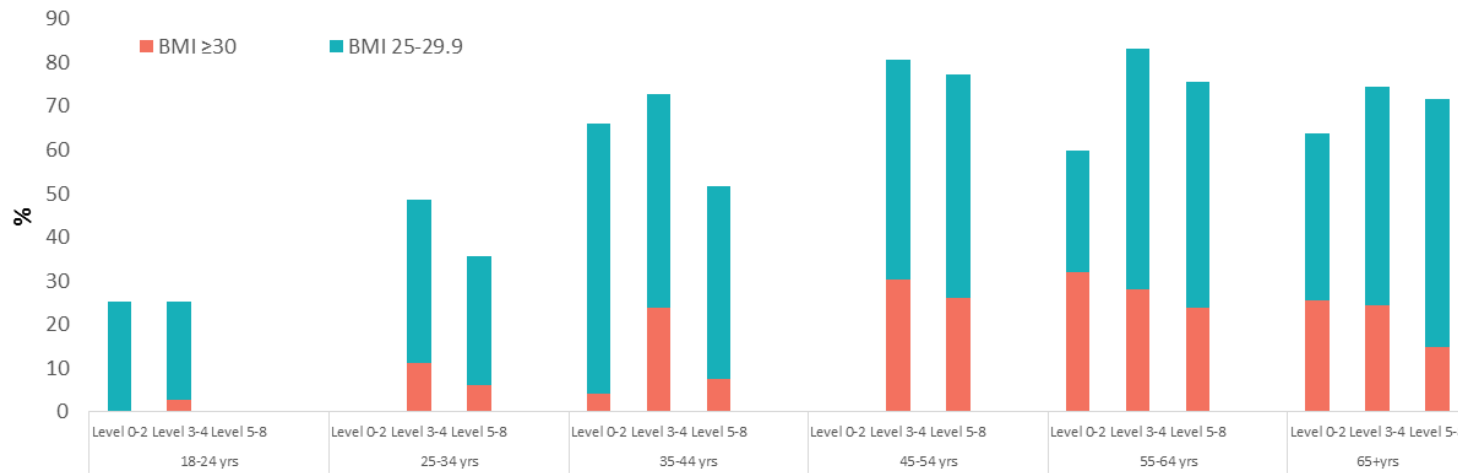




% Overweight & Obesity in children in the Czech Republic (2005)



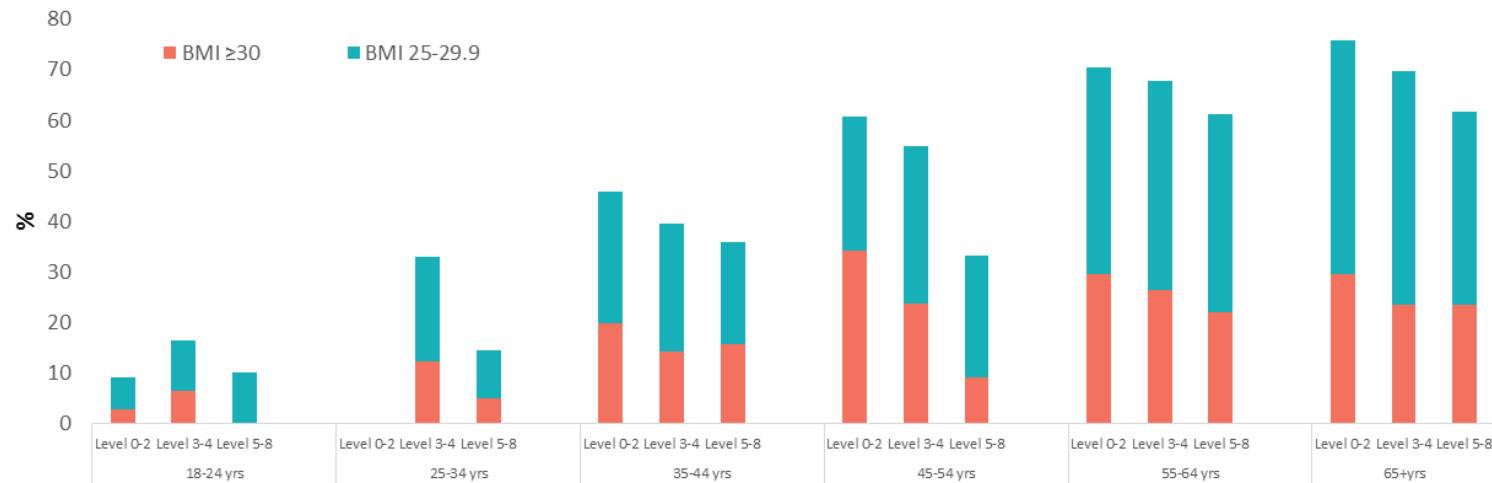
% Overweight and Obesity by age & educational attainment in males in the Czech Republic 2014



Less than primary, primary and lower secondary education (levels 0-2)
 Upper secondary and post-secondary non-tertiary education (levels 3 and 4)
 Tertiary education (levels 5-8)

NB Insufficient/unreliable/missing data in younger age categories

% Overweight and Obesity by age & educational attainment in females in the Czech Republic 2014

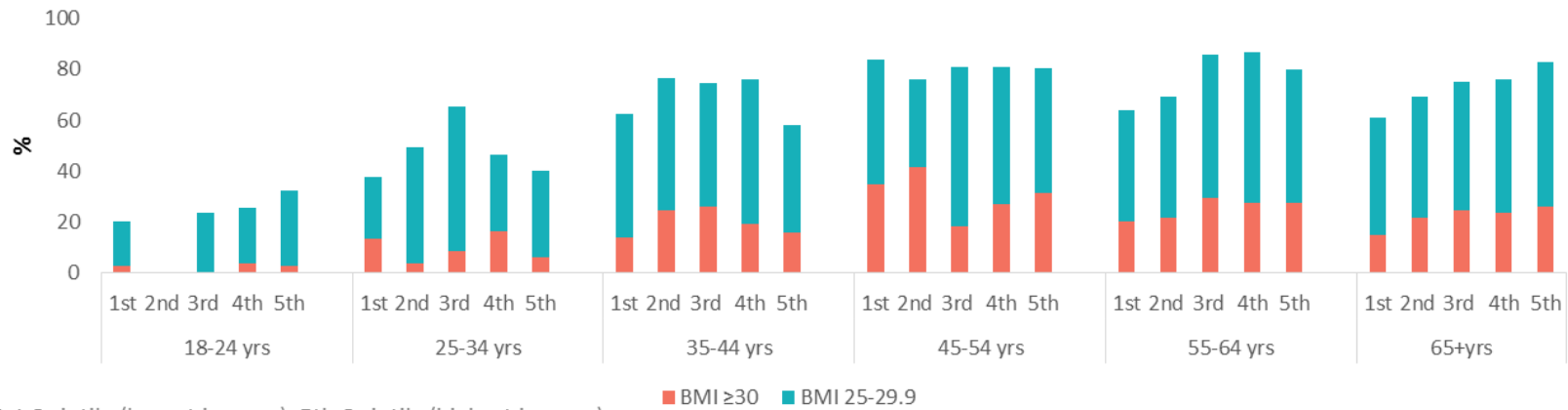


Less than primary, primary and lower secondary education (levels 0-2)
 Upper secondary and post-secondary non-tertiary education (levels 3 and 4)
 Tertiary education (levels 5-8)

NB Insufficient/unreliable/missing data in younger age categories



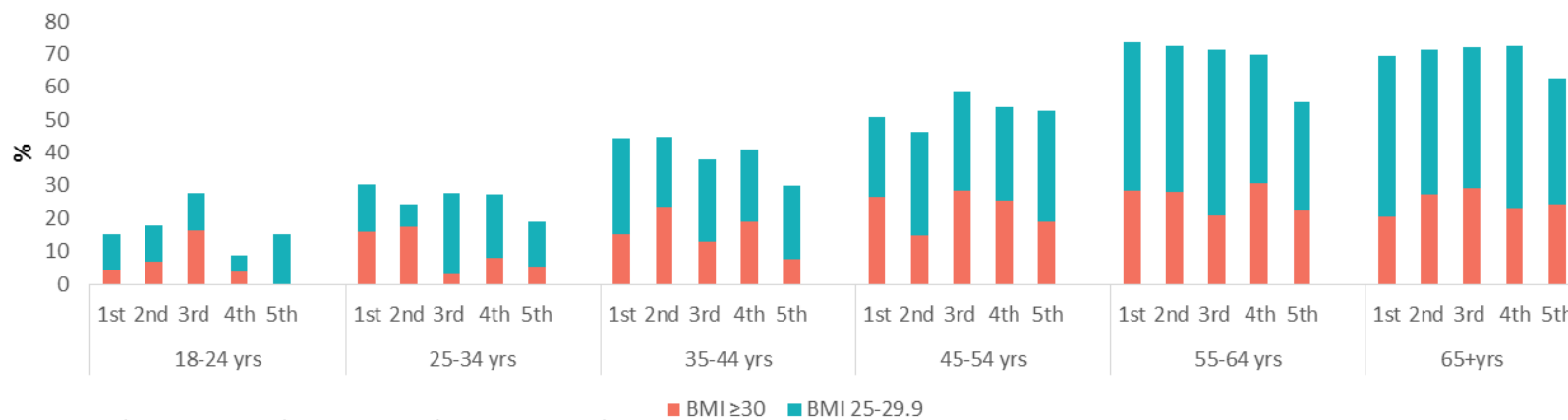
% Overweight & Obesity by age & income quintile in males living in the Czech Republic 2014



1st Quintile (lowest income), 5th Quintile (highest income)



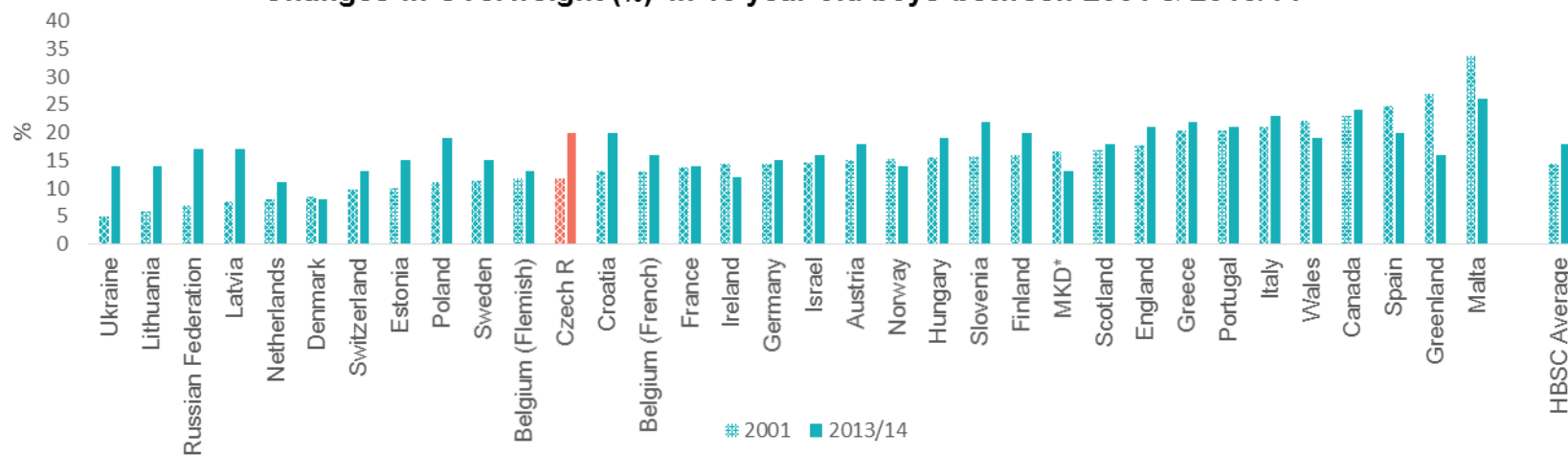
% Overweight & Obesity by age and income quintile in females living in the Czech Republic 2014



1st Quintile (lowest income), 5th Quintile (highest income)



Changes in Overweight (%) in 13 year old boys between 2001 & 2013/14

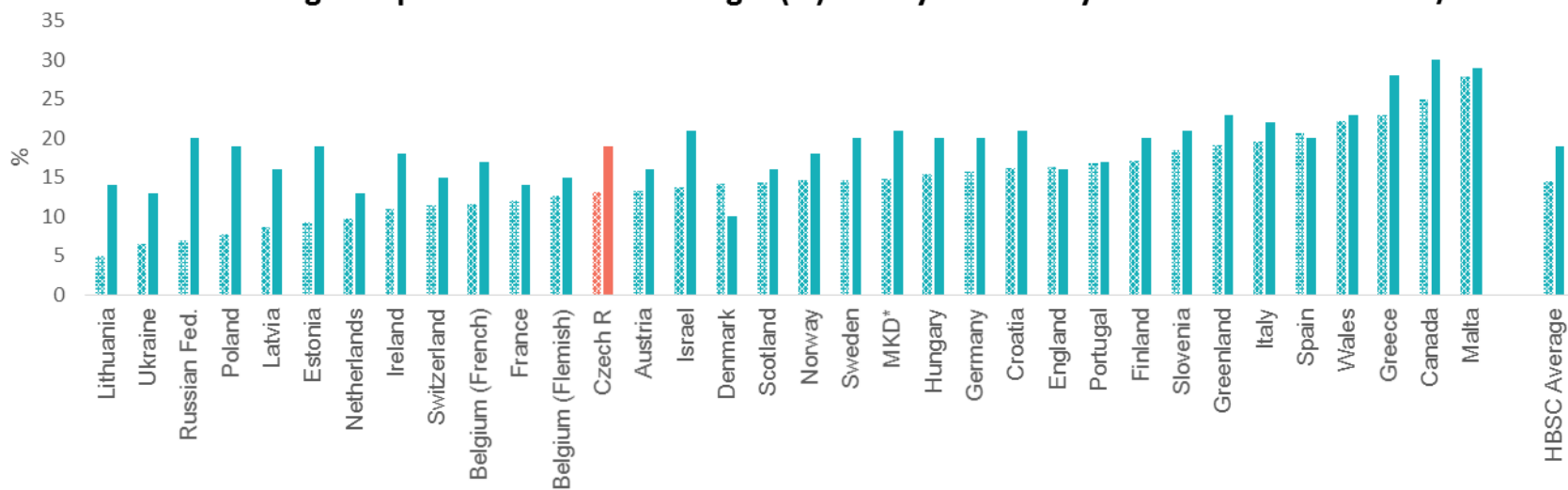


* The Former Yugoslav Republic Macedonia

Based on self report data from the Health Behaviour in School Aged Children (HBSC) Study using IOTF International Cut Off Points



Changes in prevalence of Overweight (%) in 15 year old boys between 2001 & 2013/14



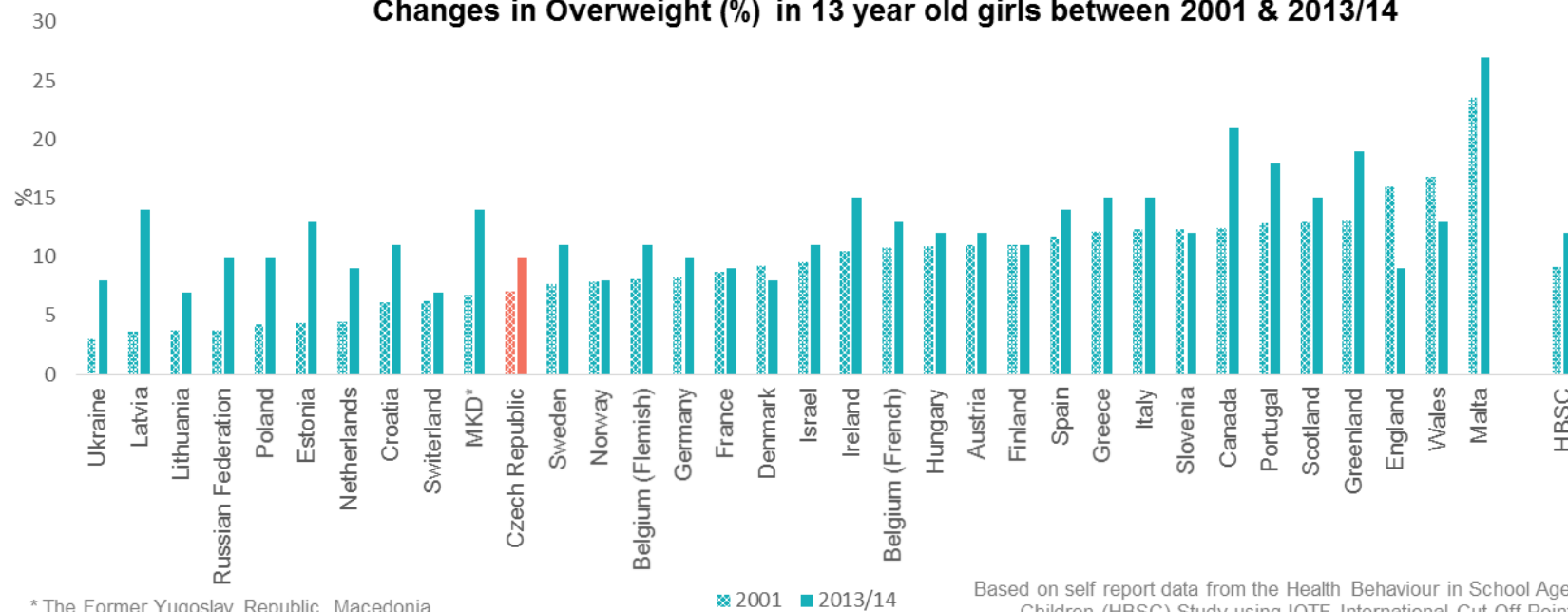
* The Former Yugoslav Republic Macedonia

2001 2013/14

Based on self report data from the Health Behaviour in School Aged Children (HBSC) Study using IOTF International Cut Off Points



Changes in Overweight (%) in 13 year old girls between 2001 & 2013/14

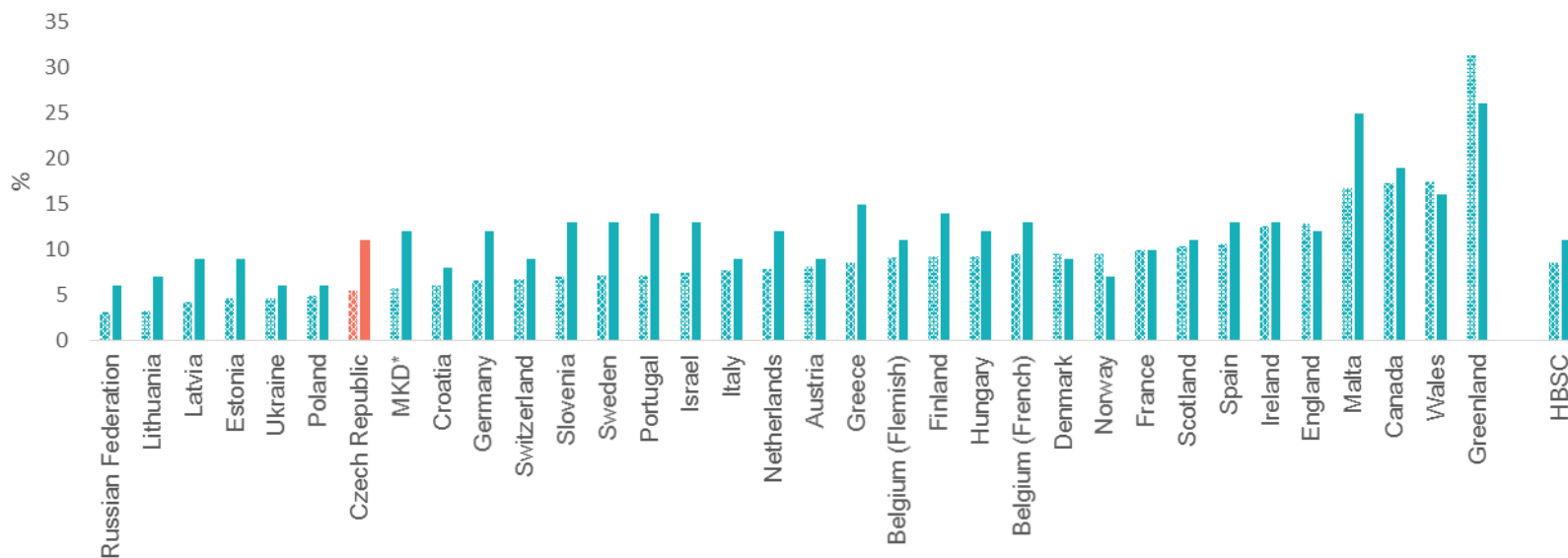


* The Former Yugoslav Republic Macedonia

Based on self report data from the Health Behaviour in School Aged Children (HBSC) Study using IOTF International Cut Off Points



Changes in prevalence of Overweight (%) in 15 year old girls between 2001 & 2013/14



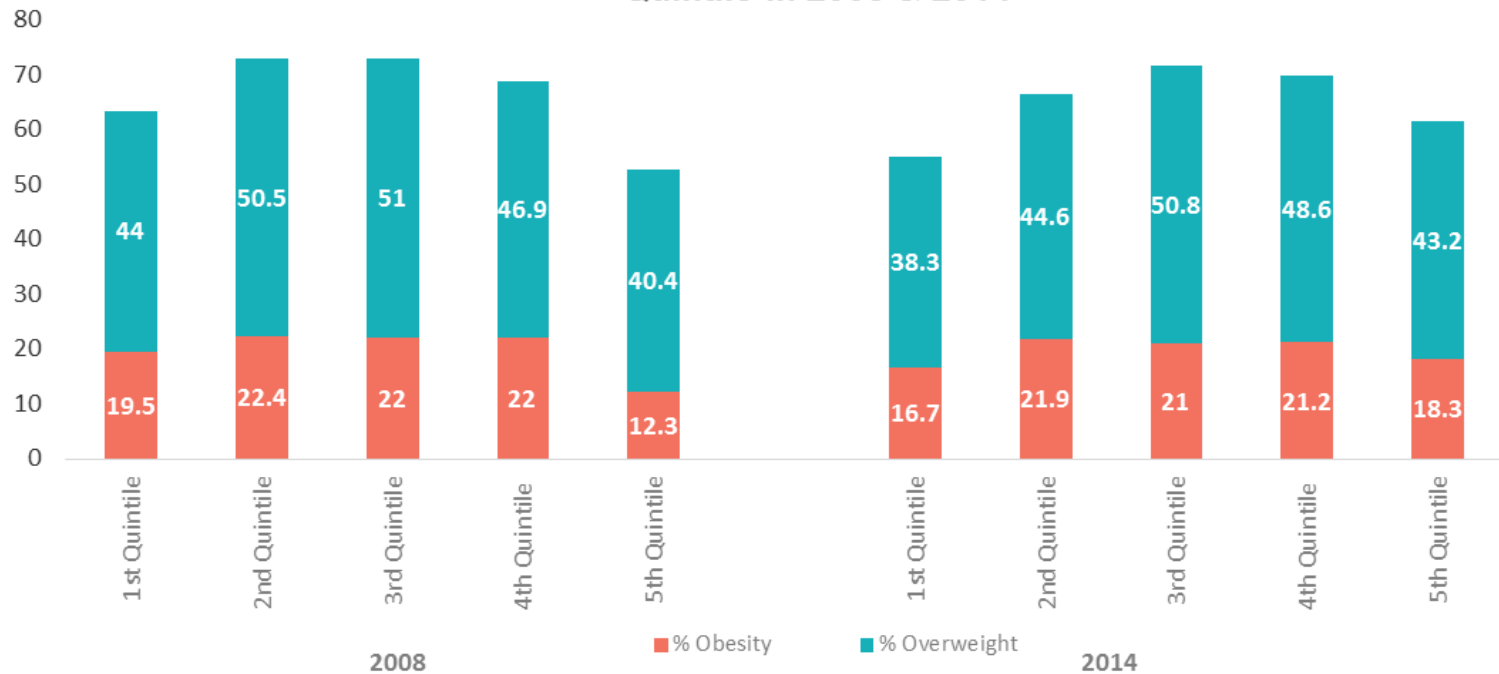
* The Former Yugoslav Republic Macedonia

■ 2001 ■ 2013/14

Based on self report data from the Health Behaviour in School Aged Children (HBSC) Study using IOTF International Cut Off Points



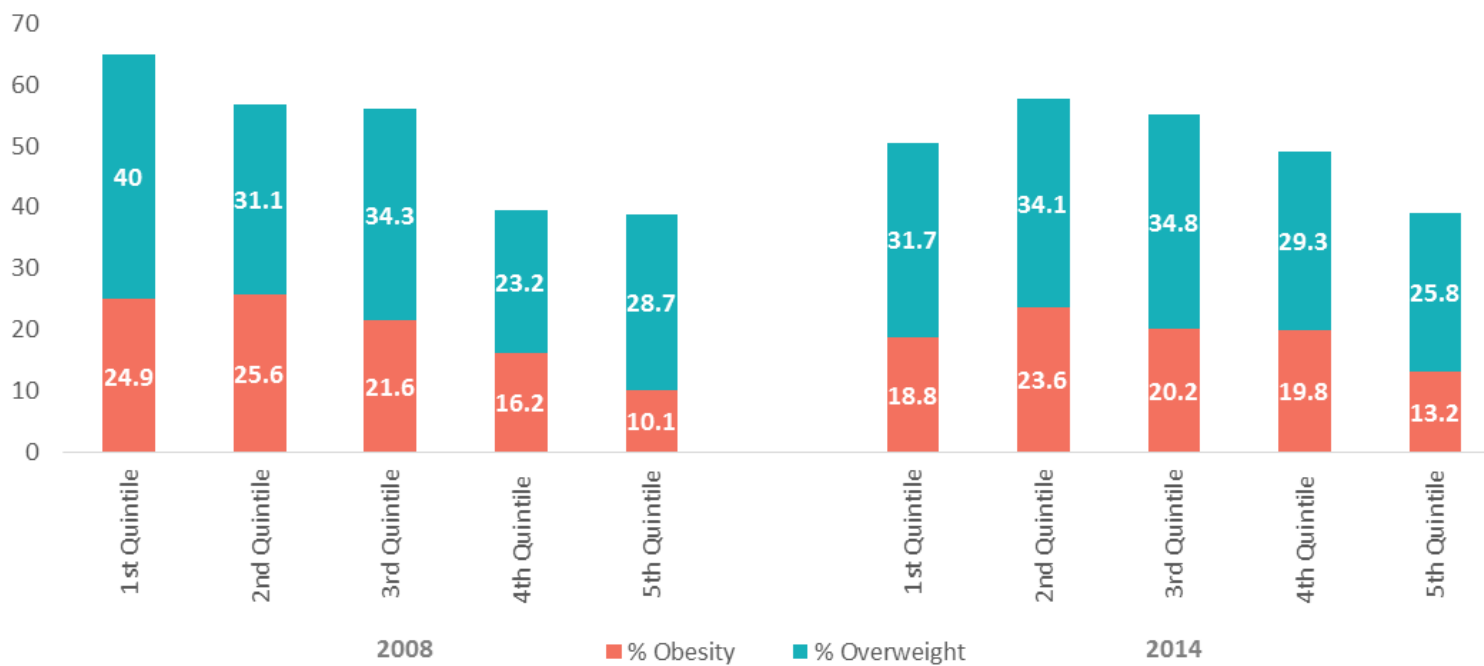
% Overweight & Obesity in Male adults from the Czech Republic by Income Quintile in 2008 & 2014



1st Quintile lowest income, 5th Quintile Highest income



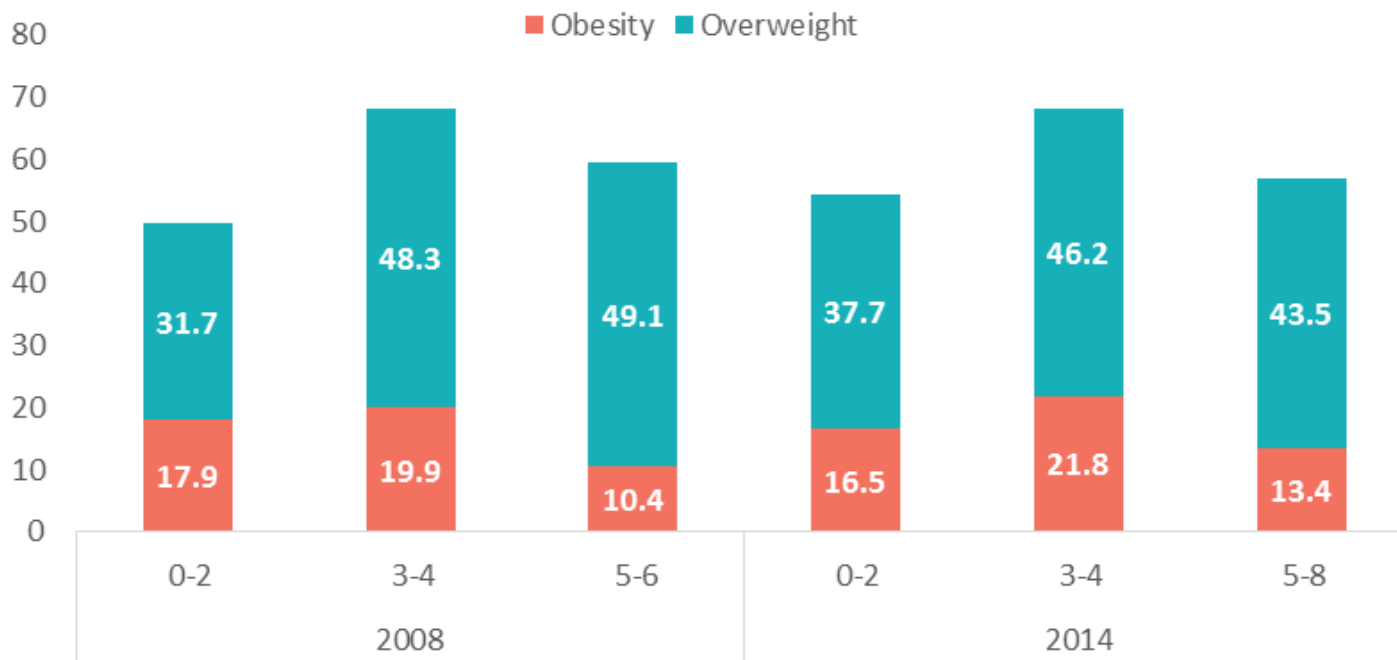
% Overweight & Obesity in Female Adults from the Czech Republic by Income Quintile in 2008 & 2014



1st Quintile lowest income, 5th Quintile Highest income



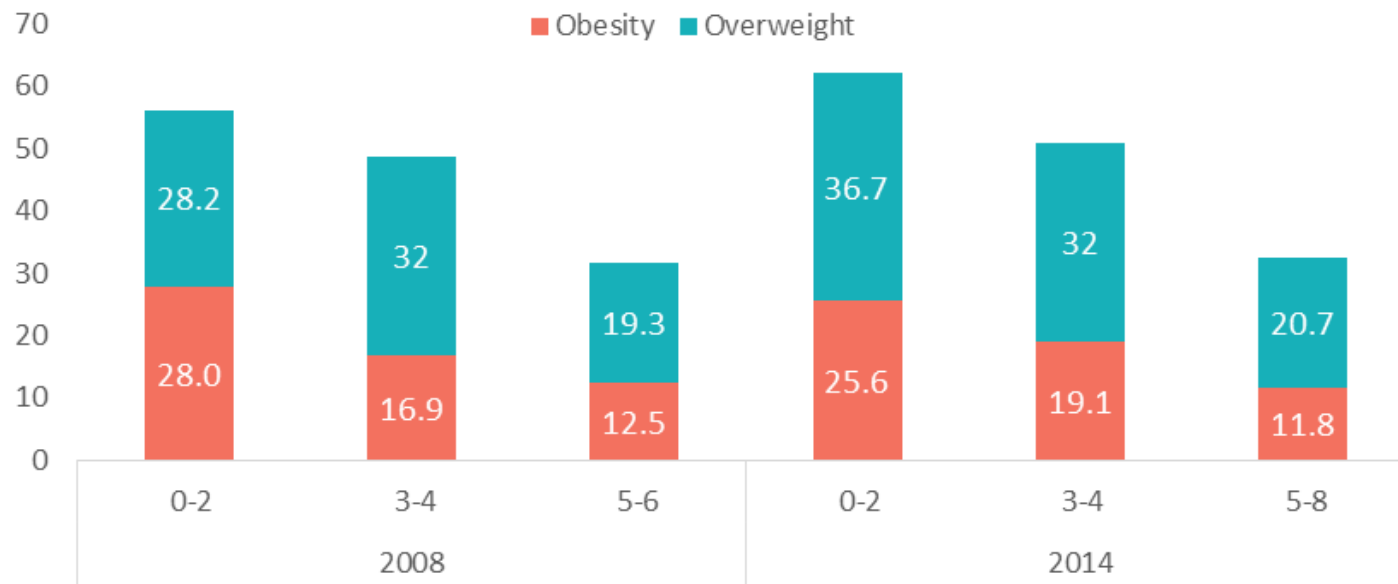
% Overweight & Obesity in Male adults from the Czech Republic
by Educational attainment 2008 & 2014



Less than primary, primary and lower secondary education (levels 0-2)
Upper secondary and post-secondary non-tertiary education (levels 3 and 4)
Tertiary education (levels 5-6/8)



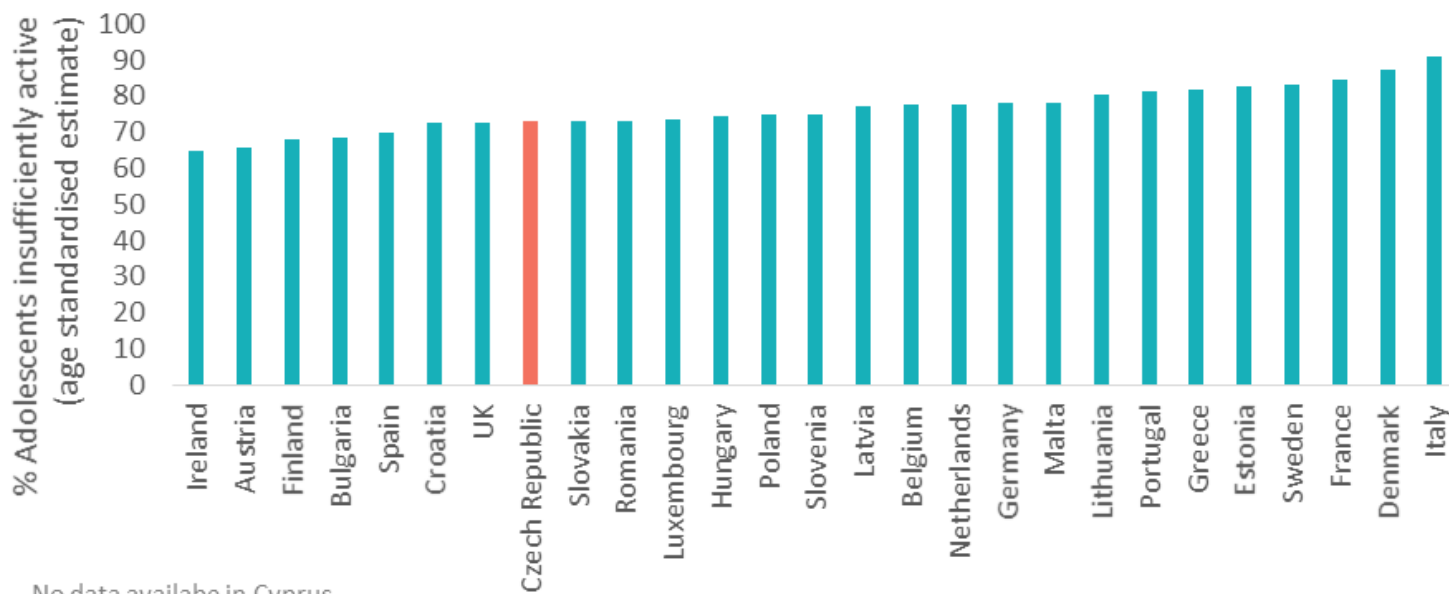
% Overweight & Obesity in Female adults from the Czech Republic
by Educational attainment 2008 & 2014



Less than primary, primary and lower secondary education (levels 0-2)
Upper secondary and post-secondary non-tertiary education (levels 3 and 4)
Tertiary education (levels 5-6/8)



% Insufficiently active male adolescents living in EU Member Countries (2010)





% Insufficiently active female adolescents living in EU Member Countries (2010)



No data available in Cyprus

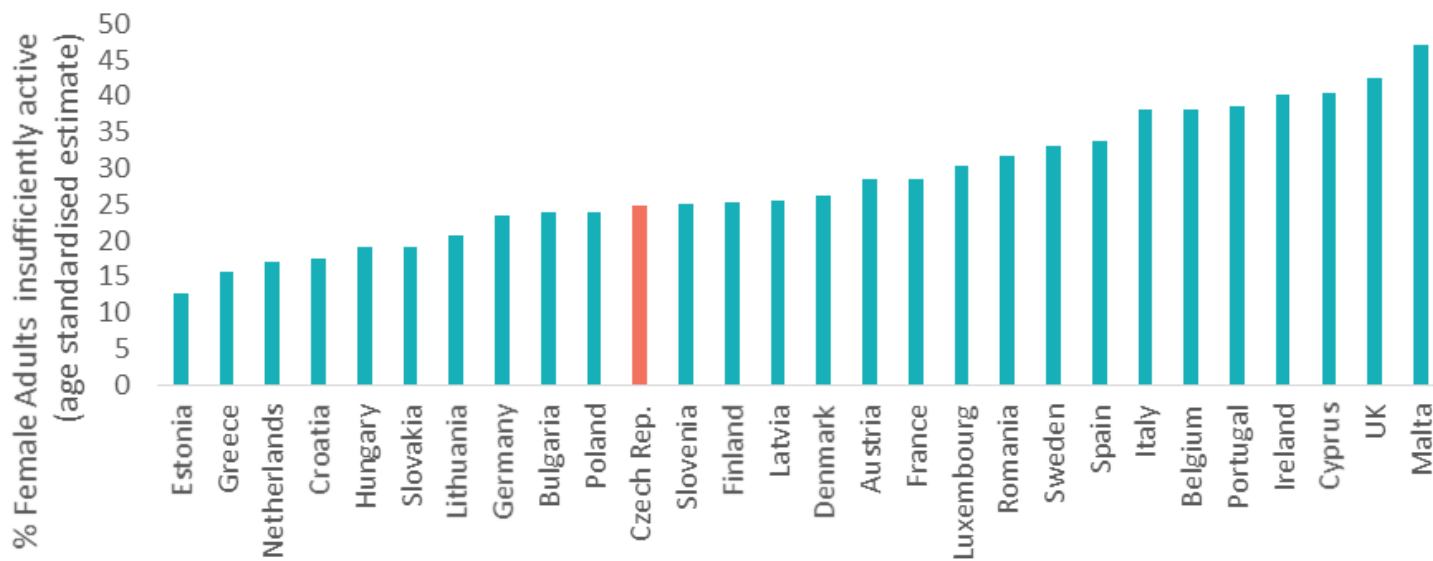


% Insufficiently active male adults living in EU Member Countries (2010)





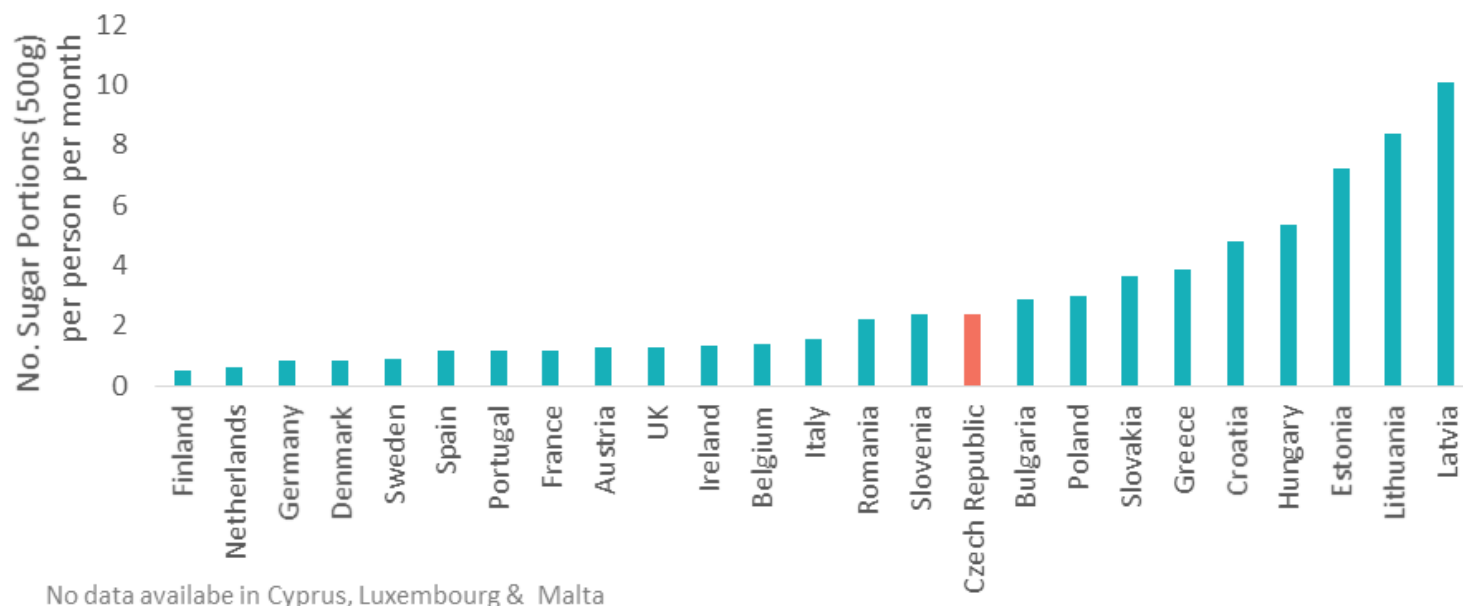
% Insufficiently active female adults living in EU Member Countries (2010)



No data available in Cyprus

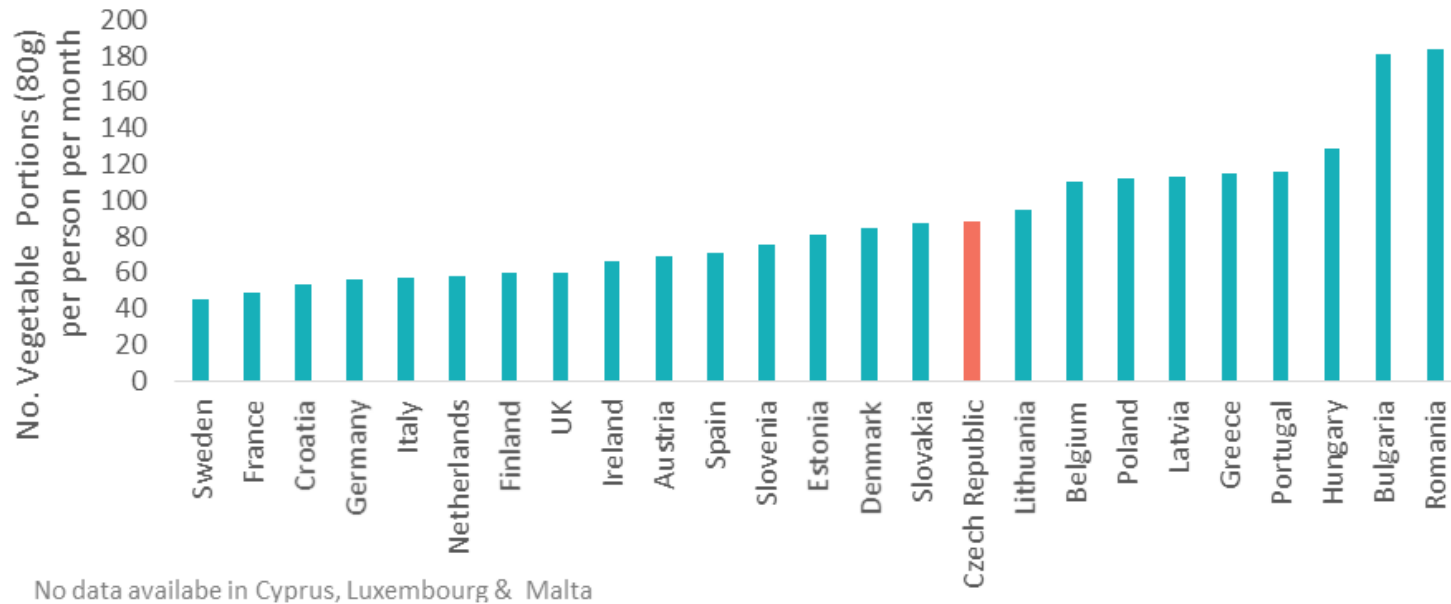


Sugar Consumption/Sales for individuals living in EU Member Countries





Vegetable Consumption/Sales for individuals living in EU Member Countries





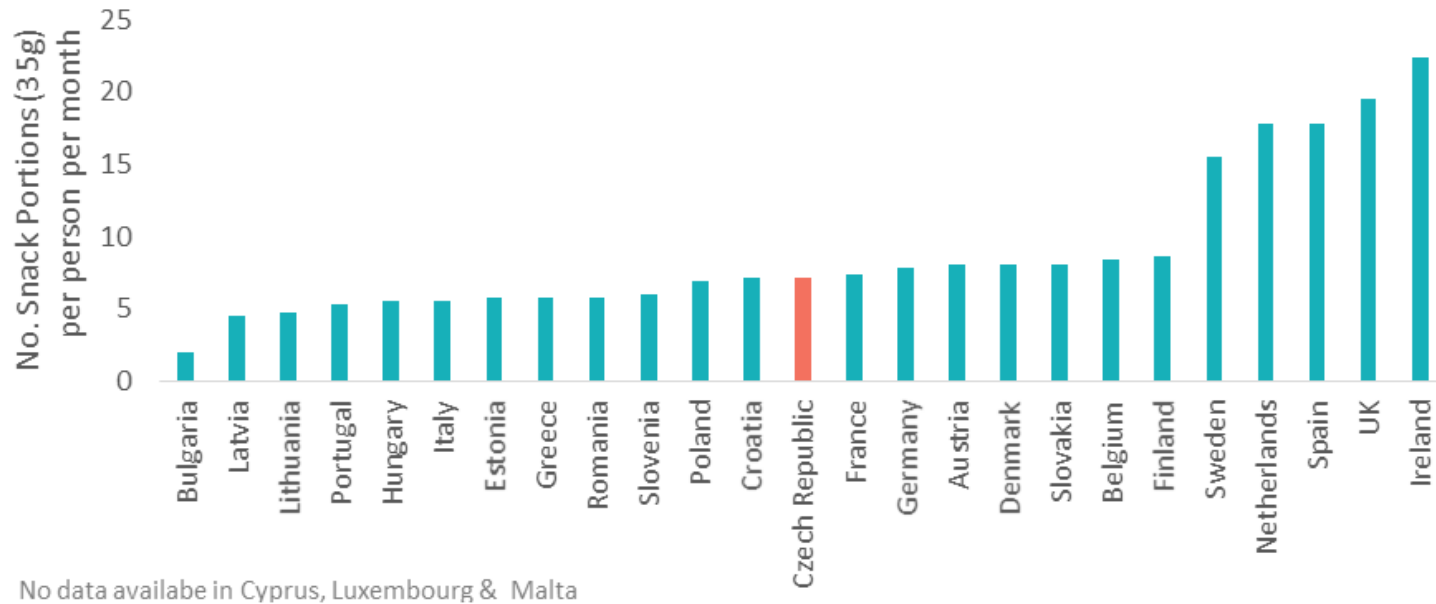
Confectionery Consumption/Sales for individuals living in EU Member Countries



No data available in Cyprus, Luxembourg & Malta

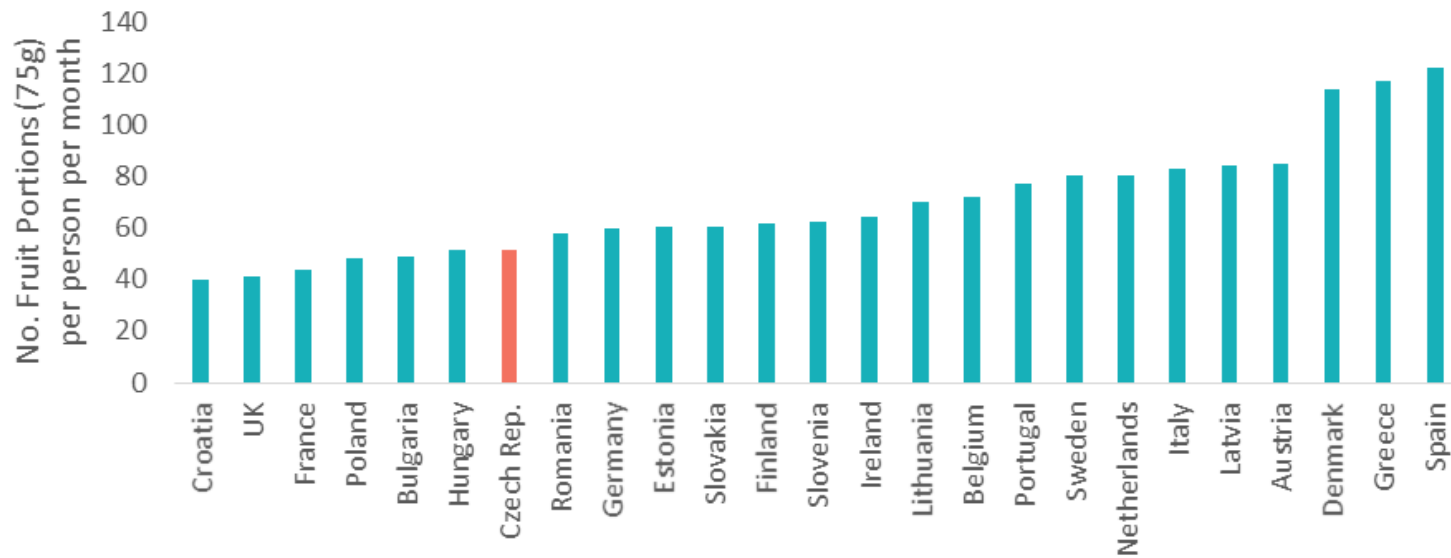


Sweet & Savoury Snack Consumption/Sales for individuals living in EU Member Countries





Fruit Consumption/Sales for individuals living in EU Member Countries



No data available in Cyprus, Luxembourg & Malta



Soft Drink Consumption/Sales for individuals living in EU Member Countries

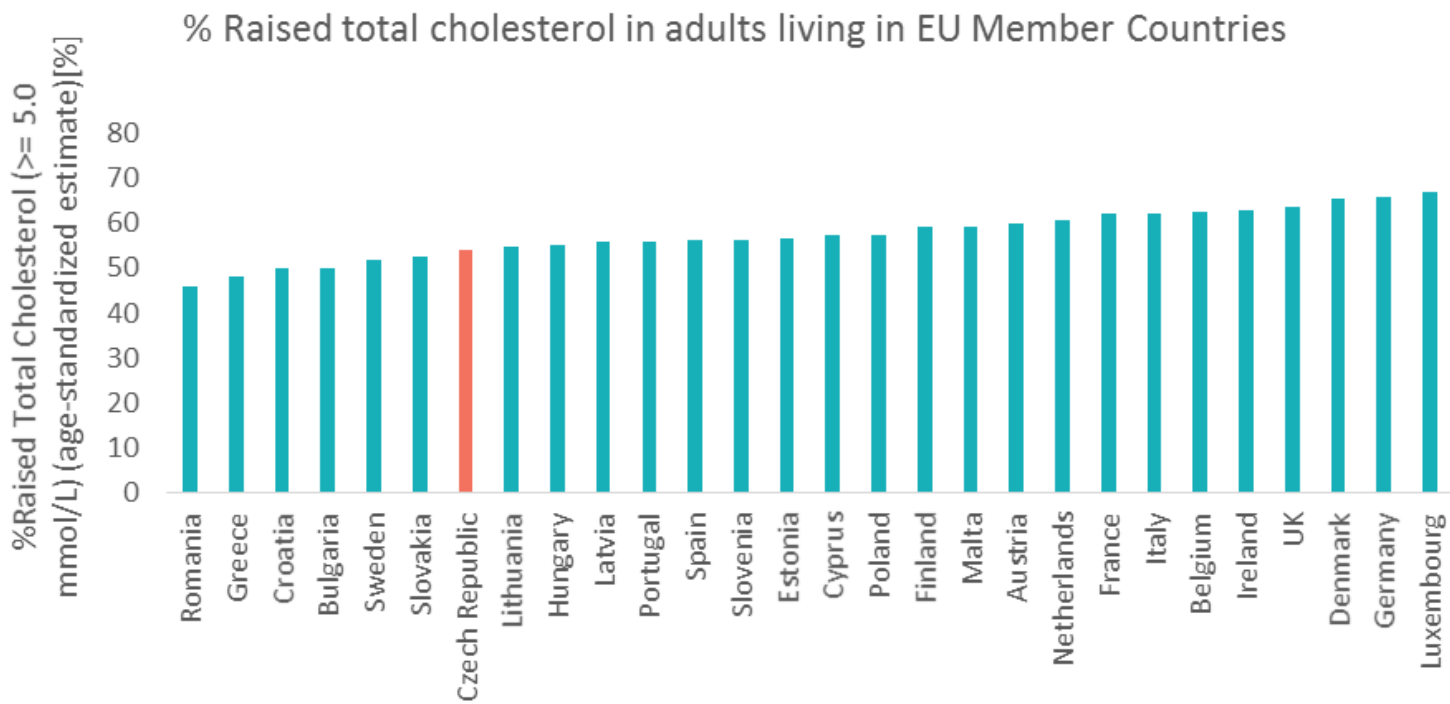


No data available in Cyprus, Luxembourg & Malta



Diabetes age-adjusted comparative prevalence [%] in adults living in EU Member Countries





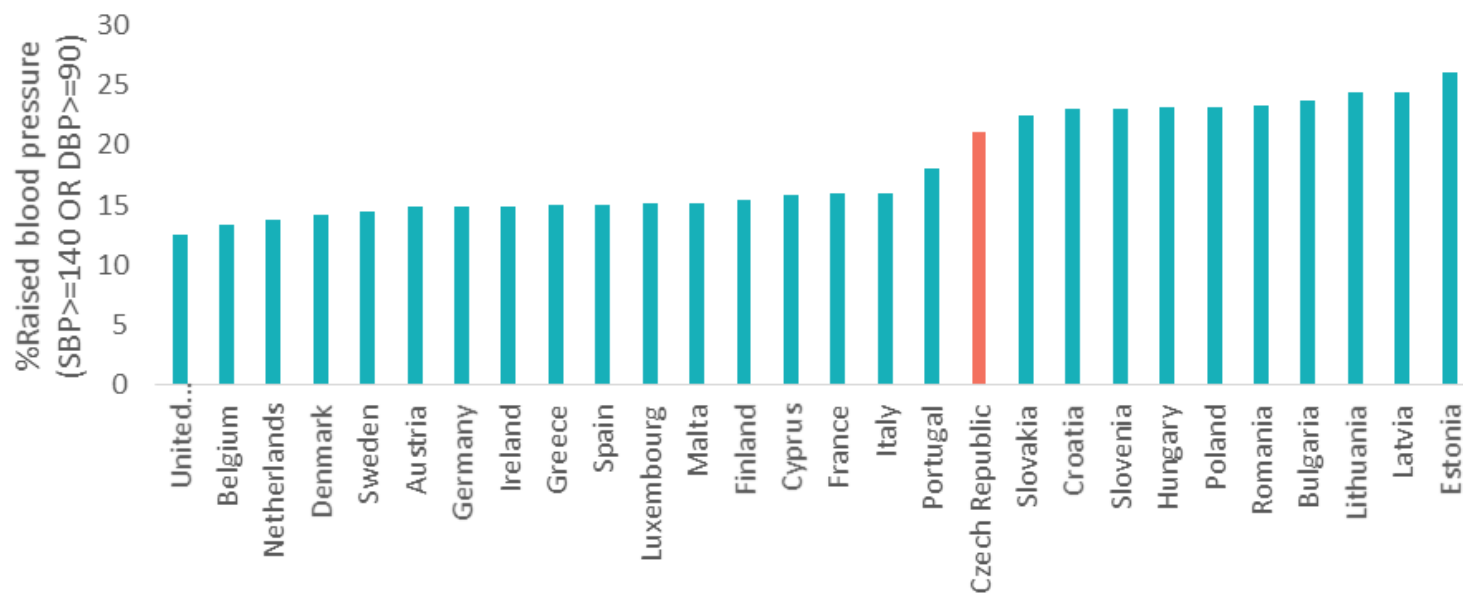


% Raised blood pressure in males living in EU Member Countries (2014)





% Raised blood pressure in females living in EU Member Countries (2014)





Colorectal Cancer incidence in males living in EU Member Countries



*ASR(W) Age Standardised Rate (to World Standard Population) expressed per 100,000



Colorectal Cancer incidence in females living in EU Member Countries



*ASR(W) Age Standardised Rate (to World Standard Population) expressed per 100,000



Breast Cancer incidence in females living in EU Member Countries



*ASR(W) Age Standardised Rate (to World Standard Population) expressed per 100,000



Cancer of the Uterus incidence in females living in EU Member Countries



*ASR(W) Age Standardised Rate (to World Standard Population) expressed per 100,000



Pancreatic Cancer incidence in males living in EU Member Countries



*ASR(W) Age Standardised Rate (to World Standard Population) expressed per 100,000



Pancreatic Cancer incidence in females living in EU Member Countries



*ASR(W) Age Standardised Rate (to World Standard Population) expressed per 100,000



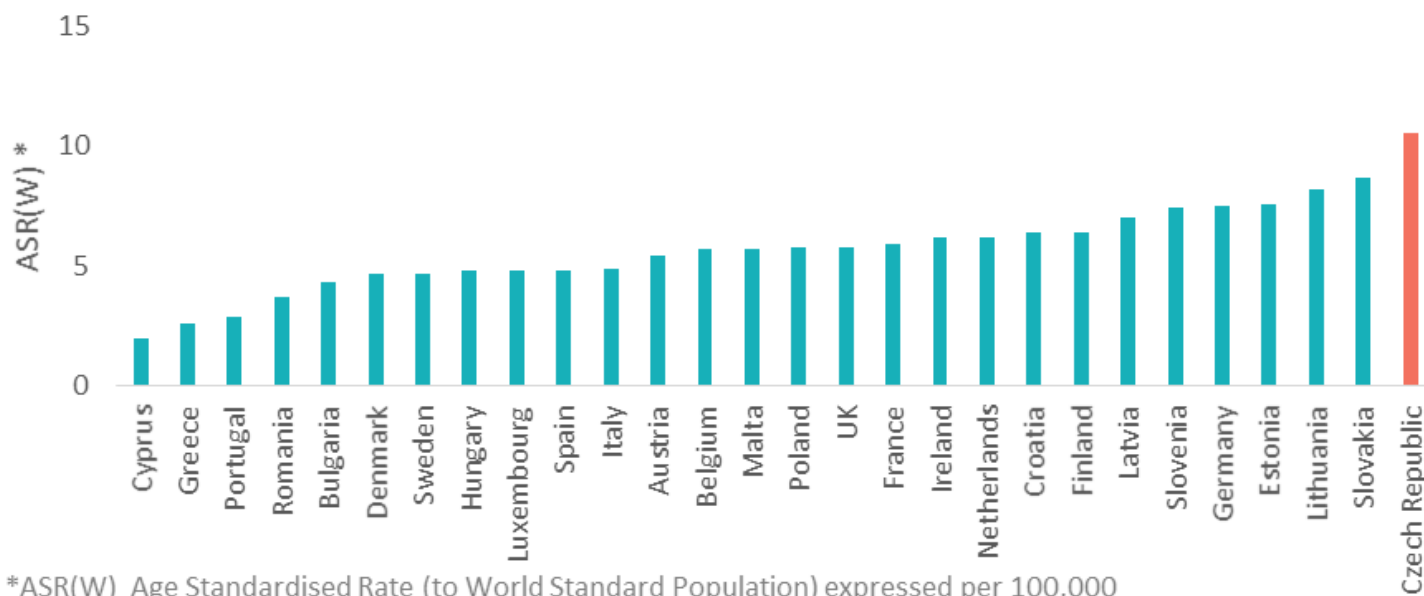
Cancer of the Kidney incidence in males living in EU Member Countries



*ASR(W) Age Standardised Rate (to World Standard Population) expressed per 100,000



Cancer of the Kidney incidence in females living in EU Member Countries



*ASR(W) Age Standardised Rate (to World Standard Population) expressed per 100,000

Actions Map	Select link below to view (right click to open hyperlink)
Obesity Related Policies or Interventions	Adults
	Child
	Adult & Child



% Overweight & Obesity Maps	(select link below to view)	
Current Prevalence	Men Boys	Women Girls
By Age	Adult	Child
By Region	Adult n/a	Child n/a
By Educational Status	Adult	Child n/a
By Socio-economic group	Adult	Child n/a
Trend NB. To view the time period you are interested in you must choose a time period and click 'Change year' to update the map)	Men Boys	Women Girls

Sources

Overweight & Obesity %	Data sources available at www.worldobesity.org/data/
EUROSTAT data	Eurostat Database: http://ec.europa.eu/eurostat
HBSC data	Health Behaviour in School Aged Children (HBSC) http://www.hbsc.org/
Population Estimates	UN Population Estimates, United Nations, http://esa.un.org/unpd/wpp/
Diabetes estimates 2015	Reproduced with kind permission of IDF, Diabetes Estimates 2015, IDF, http://www.diabetesatlas.org/resources/2015-atlas.html
Worldwide GINI Index	Worldwide GINI Index, http://data.worldbank.org/indicator/SI.POV.GINI?locations=CZ (last accessed 12th August 2017)
Physical Inactivity estimates	Global Health Observatory data repository, World Health Organisation, http://apps.who.int/gho/data/node.main.A893?lang=en
Raised Fasting Glucose	Global Health Observatory data repository, World Health Organisation, http://apps.who.int/gho/data/node.main.A869?lang=en
Raised BP	Global Health Observatory data repository, World Health Organisation, http://apps.who.int/gho/data/node.main.A875?lang=en
Raised cholesterol	Global Health Observatory data repository, World Health Organisation, http://apps.who.int/gho/data/node.main.A885
Cancer incidence rates	Cancer incidence rates, GLOBOCAN, IARC, http://globocan.iarc.fr/Pages/online.aspx
EUROMONITOR FOOD INTAKES	Estimates calculated by World Obesity Federation based on Euro monitor food intake data. Euro monitor, http://www.euromonitor.com



This report was produced with the support of an operational grant under the European Commission's Third Health Programme (2014-2020). The European Commission is not responsible for any use that may be made of them.